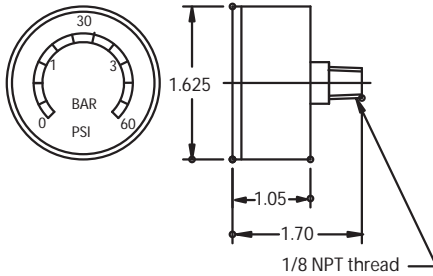


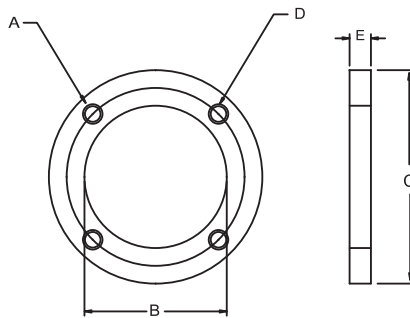
## GAUGES AND WELD RINGS

### Gauges



Housing	Part Number
W012, W015, WL16, WL18, WT15, W021, W022, WR11, WR15, WR17	P-232965-01 (0-60 psi) Color Coded for use with 25 psid bypass only
WL16, WL18, W015, W021, W022	P-238114-01 (0-60 psi) Color Coded for use with 50 psid bypass only
W015, W021, W022, W023, WL16, WL18, WR14, WR15, WR17	P-232974-01 (0-200 psi) Color Coded none color code D

### Weld Rings



Housing/ Service Part#	Dimensions				
	A	B	C	D	E
WL16, WL18 P-232964-01	7/16 - 20 UNF thru (4) on 6.25 dia BC equally spaced	5.00	7.12	7/16 - 20 UNF x 0.75 long	0.50
WT15 P-233637	5/16 - 18 UNC thru (4) on 4.70 dia. BC equally spaced	3.50	5.50	5/16 - 18 UNC x 0.75 long	0.50
WR10 P-236926	5/16 - 18 UNC thru (4) on 3.35 dia. BC equally spaced	2.50	4.00	5/16 - 18 UNC x 0.75 long	0.30
WR11 P-236927	5/16 - 18 UNC thru (4) on 4.40 dia. BC equally spaced	3.60	5.50	5/16 - 18 UNC x 0.75 long	7.60
WR14 P-236928	5/16 - 18 UNC thru (4) on 4.96 dia. BC equally spaced	3.75	6.00	5/16 - 18 UNC x 0.75 long	0.50
WR15 P-236929	3/8 - 16 UNC thru (4) on 6.89 dia. BC equally spaced	5.50	6.00	3/8 - 16 UNC x 0.75 long	0.50
WR17 P-236930	7/16 - 20 UNC thru (4) on 8.50 dia. BC equally spaced	6.75	9.75	7/16 - 20 UNC x 0.75 long	0.50

**Note:** Bolts recommended for use with each weld ring in Column D.